

# Comprehensive Planning

## South County Planning Area

### Planned Land Use

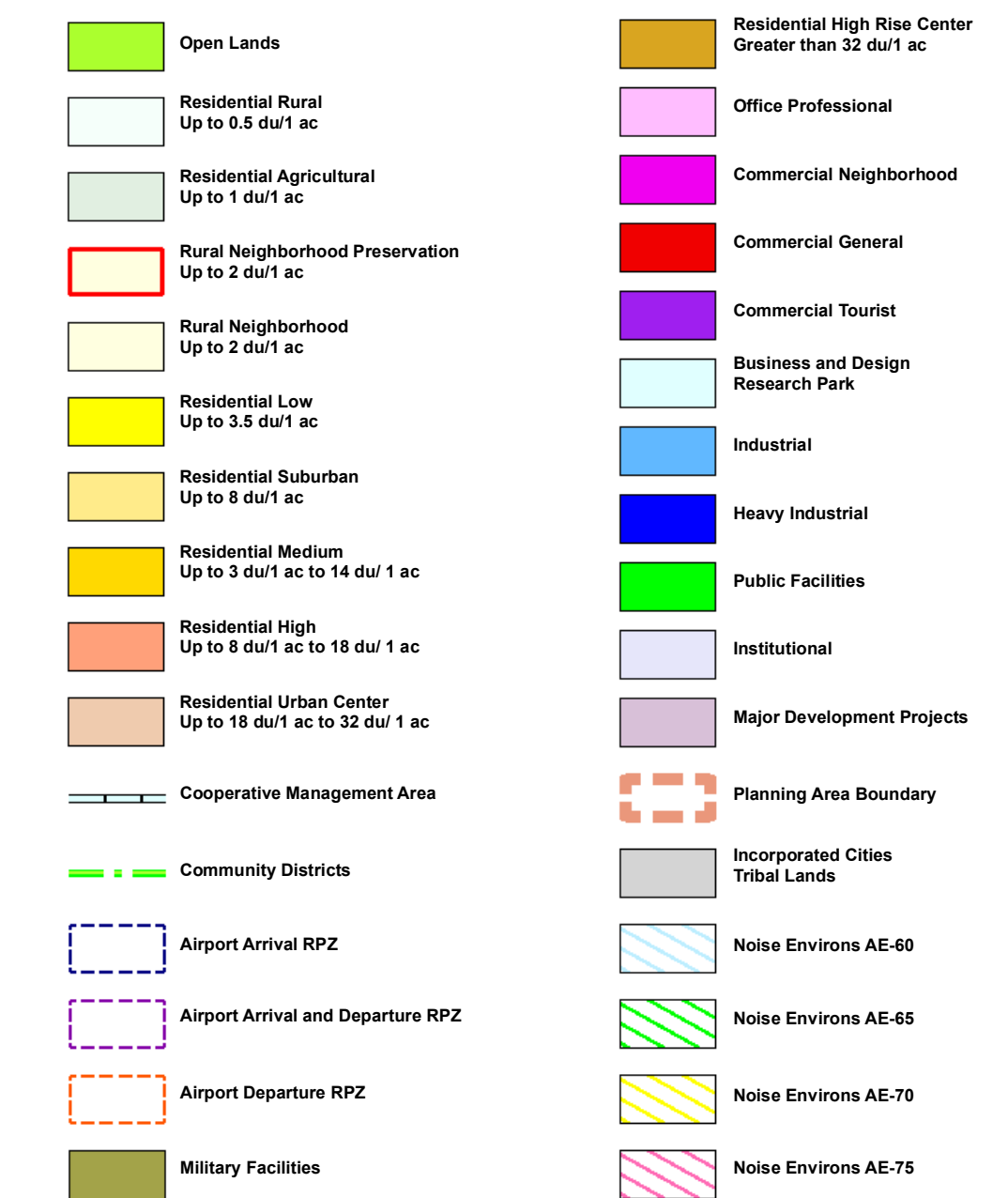
#### Palm Gardens Detail Area

Adopted June 19, 2013

# Palm Gardens

32

4E

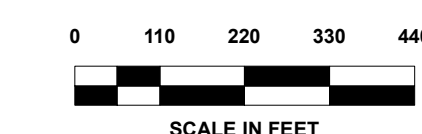


- |                         |                             |
|-------------------------|-----------------------------|
| CCSD = School District  | L = Library                 |
| E = Elementary          | P = Park                    |
| M = Middle              | W = Place of Worship        |
| H = High                | SS = Electrical Sub-Station |
| G = Government Facility | PW = Public Works           |
| GC = Golf Course        | WD = Water District         |
| F = Fire Station        | U = Utility                 |

Maps are available for overall South County and these detail Areas:

Cal-Nev-Ari, Eldorado Valley, Goodsprings, Jean, Nelson, Palm Gardens, Primm, Sandy Valley, Searchlight, Sloan

For detailed Land Use information, see Adopted Land Use Plans.



This information is for display purposes only.  
No liability is assumed as to the accuracy of the data delineated hereon.  
Categories denoted in the legend may not apply to a particular Planning Area.

