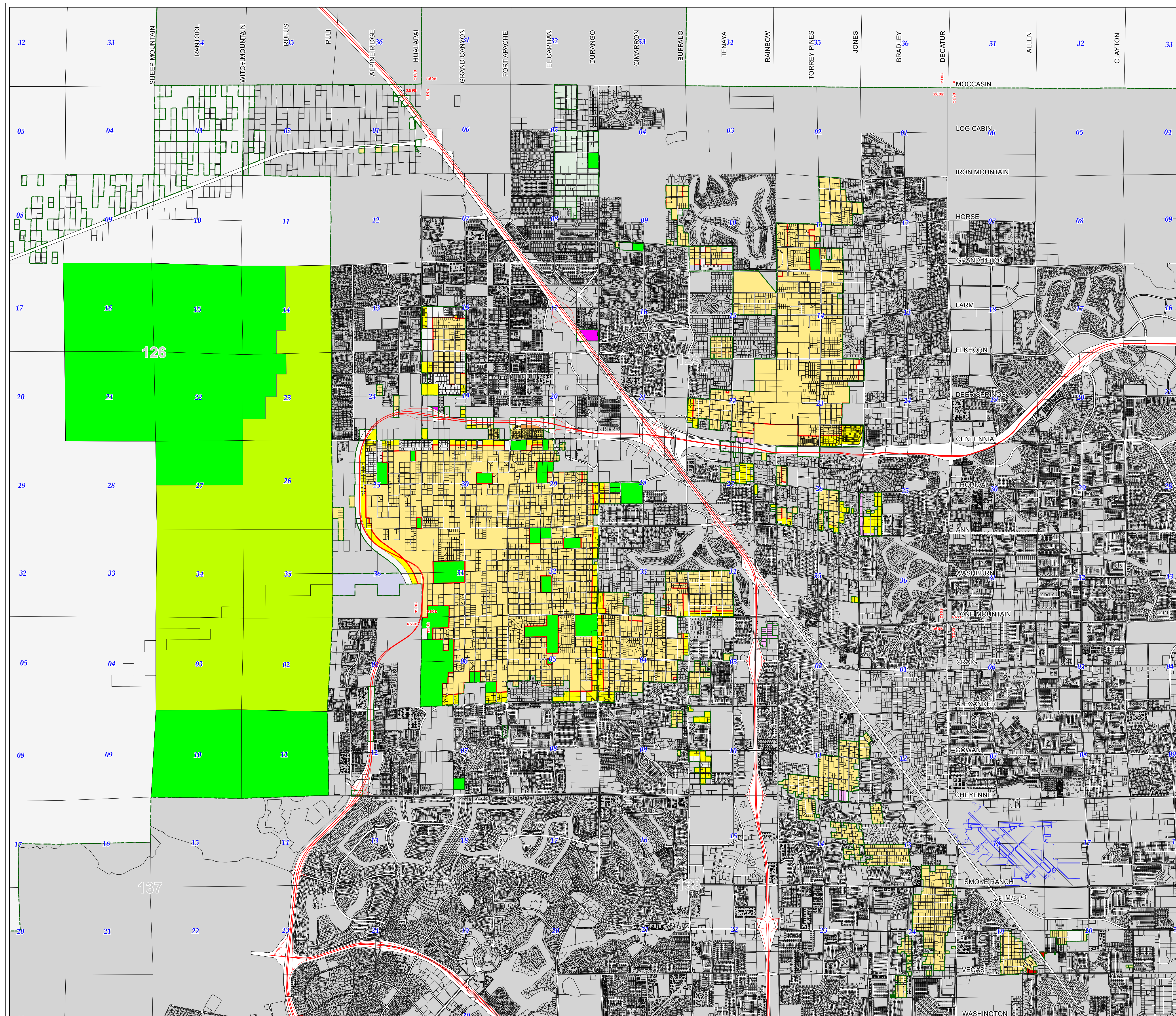


# Comprehensive Planning Lone Mountain Planning Area Planned Land Use

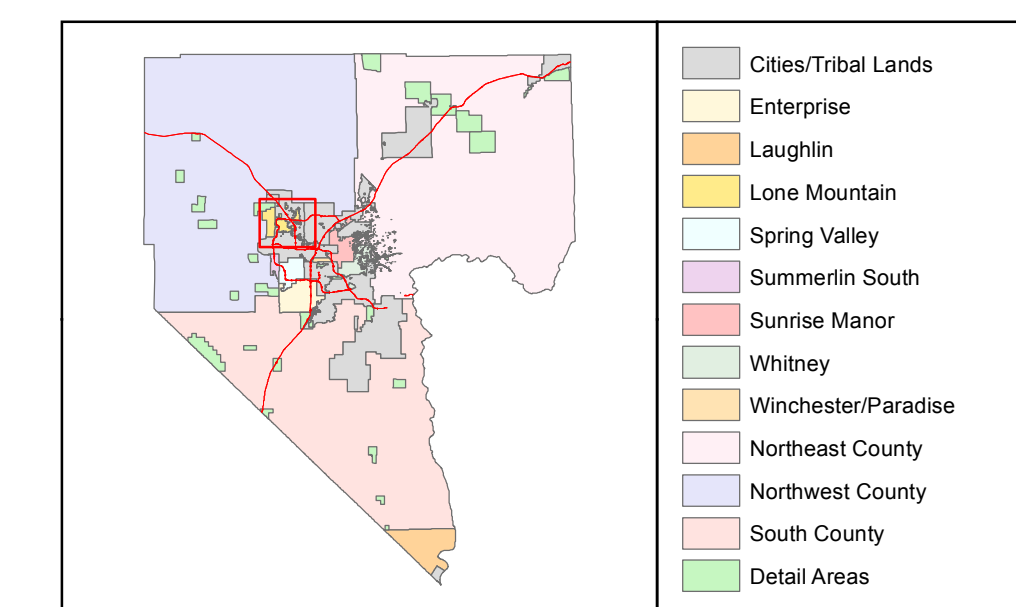
Adopted on December 3, 2014



- |                                                         |                                                        |
|---------------------------------------------------------|--------------------------------------------------------|
| Open Lands                                              | Residential High Rise Center<br>Greater than 32 du/1ac |
| Residential Rural<br>Up to 0.5 du/1ac                   | Office Professional                                    |
| Residential Agricultural<br>Up to 1 du/1ac              | Commercial Neighborhood                                |
| Rural Neighborhood Preservation<br>Up to 2 du/1ac       | Commercial General                                     |
| Rural Neighborhood<br>Up to 2 du/1ac                    | Commercial Tourist                                     |
| Residential Low<br>Up to 3.5 du/1ac                     | Business and Design<br>Research Park                   |
| Residential Suburban<br>Up to 8 du/1ac                  | Industrial                                             |
| Residential Medium<br>From 3 du/1ac to 14 du/1ac        | Heavy Industrial                                       |
| Residential High<br>From 8 du/1ac to 18 du/1ac          | Public Facilities                                      |
| Residential Urban Center<br>From 18 du/1ac to 32 du/1ac | Institutional                                          |
|                                                         | Major Development Projects                             |

- Community Districts
- Planning Area Boundaries
- AE 60 Zone
- AE 65 Zone
- AE 70 Zone
- AE 75 Zone

- |                         |                             |
|-------------------------|-----------------------------|
| CCSD = School District  | L = Library                 |
| E = Elementary          | P = Park                    |
| M = Middle              | W = Place of Worship        |
| H = High                | SS = Electrical Sub-Station |
| G = Government Facility | PW = Public Works           |
| GC = Golf Course        | WD = Water District         |
| F = Fire Station        | U = Utility                 |



Map Created On: November 3, 2015

This information is for display purposes only.  
No liability is assumed as to the accuracy of the data delineated hereon.  
Categories denoted in the legend may not apply to a particular Planning Area.

