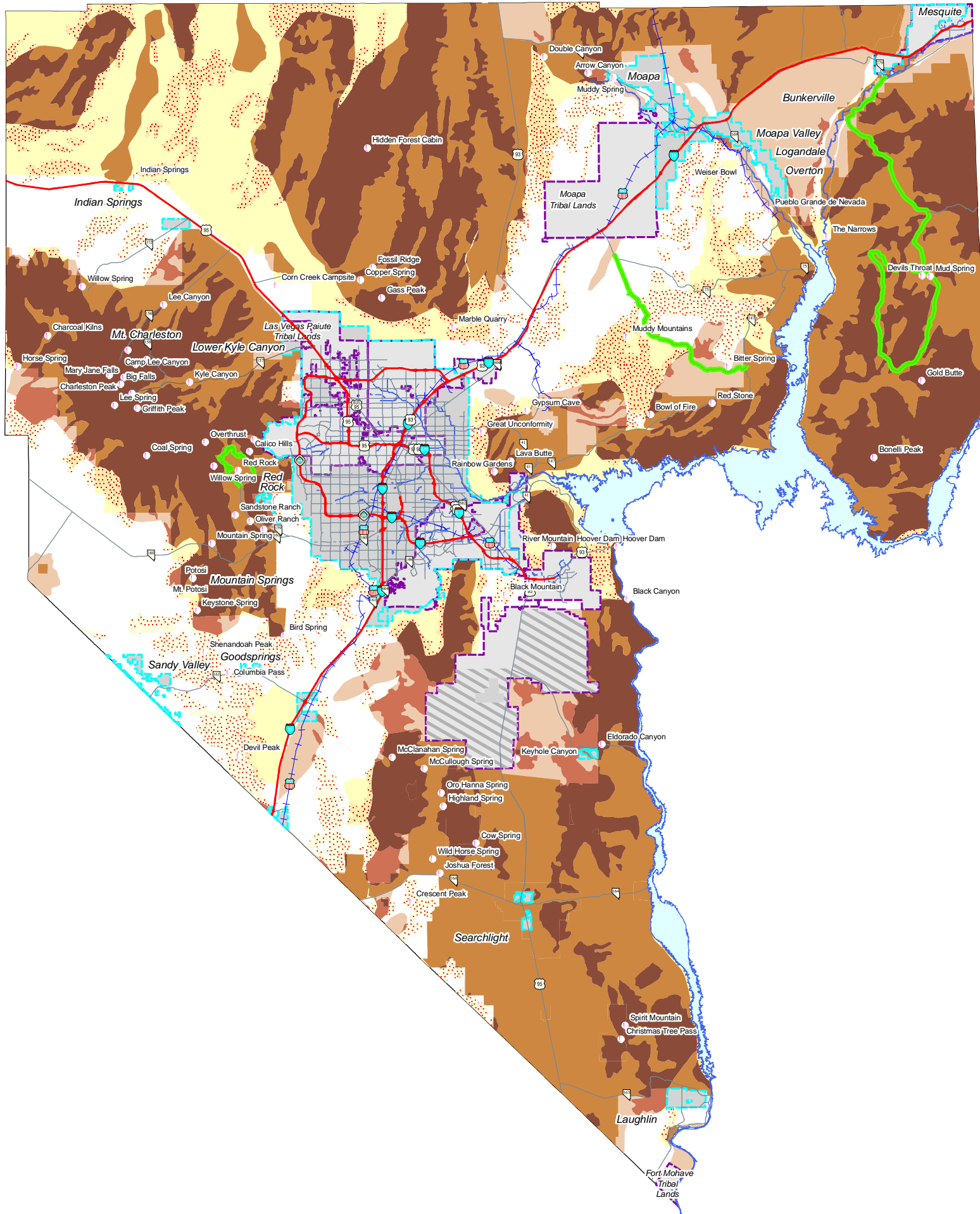


Clark County
Environmentally Sensitive Lands



- ESL - Priority 1
- ESL - Priority 2
- ESL - Priority 3
- ESL - Priority 4
- ESL - Priority 5
- ESL - Priority 6
- ESL - Priority 7
- BLM Disposal Areas
- Non-ESL Administrative Areas
- Boulder City Conservation Easement
- Scenic Highways and Federal Byways
- Aesthetic, Historic and Cultural Sites

Date: Jauary 29, 2004

0 39,990 79,980 119,970 159,960

SCALE IN FEET

Source: Clark County Central Repository

*This information is for display purposes only.
No liability is assumed as to the accuracy of the data delineated hereon.*

