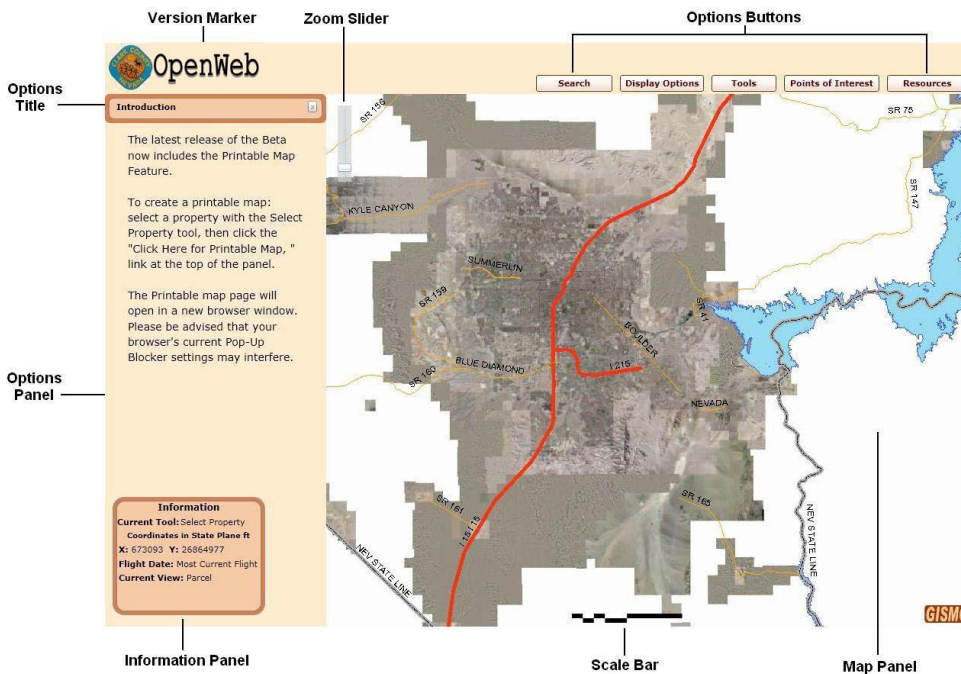


Open Interface



Navigation & Shortcuts

Wheel Mouse Navigation

Pan	Left Click & Drag
Zoom In	Roll Up
Zoom Out	Roll Down
Zoom In Square	<Shift> + Left Click & Drag
Zoom Out Square	<Ctrl> + <Shift> + Left Click & Drag







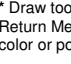
Keystroke Shortcuts

Pan Up	< ↑ >
Pan Down	< ↓ >
Pan Left	< ← >
Pan Right	< → >
Zoom In	<+>
Zoom Out	<- >
Full Screen Mode	<F11>

Options Buttons

Search	Display Options	Tools	Points of Interest	Resources
<ul style="list-style-type: none"> Search Tools 	<ul style="list-style-type: none"> OpenWeb Views Dropdown Show Aerial Photo Check Box Aerial Flight Drop Down Show Right-of-Way Check Box Show Map Information Check Box 	<ul style="list-style-type: none"> Search Tools Select Property Tool Drawing \ Measure Export Map 	<ul style="list-style-type: none"> Public Facilities Drop Down Community Centers Drop Down Submit Button 	<ul style="list-style-type: none"> Comments/Suggestions Module Survey Module Show Legend Button Quick Guide Introduction

Drawing Tools

	Draw Polygon* Draw a closed Polygon Double Click to end
	Draw Freehand* Draw using your cursor as a pencil
	Draw Polyline* Draw a line with multiple vertices
	Draw Point* Place multiple points on the map
	Add Text** Add text characters - Use with Advanced Drawing Options
	Delete Last Graphic Remove the previous graphic Also used to unselect
	Delete All Graphics Remove all graphics

* Draw tools provide measurements or location when the Return Measurements checkbox is checked. Select feature color or point style in Advanced Drawing Options

** Enter text; select size and color in Advanced Drawing Options before placement.